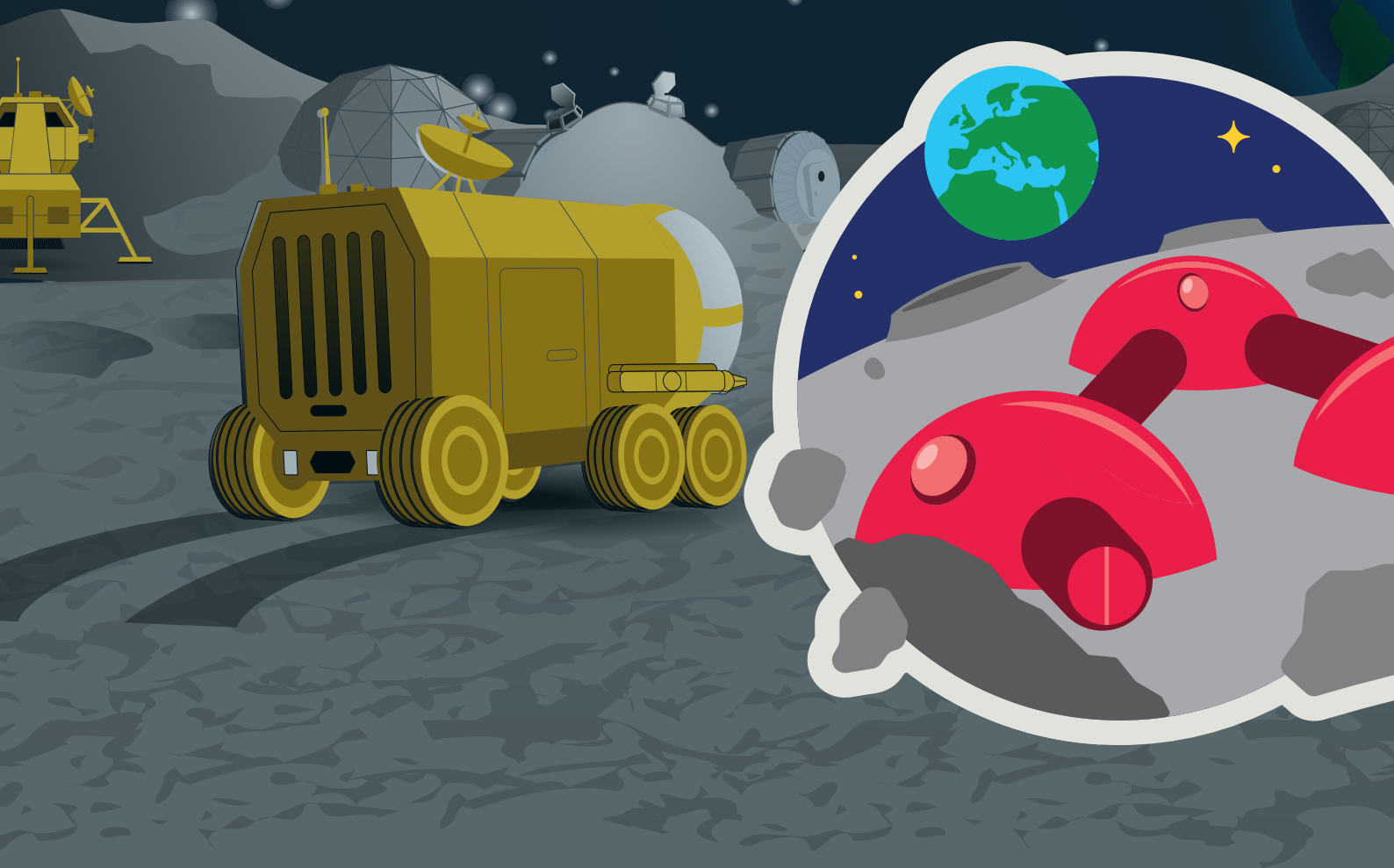


MOON CAMP

GUIDELINES

DISCOVERY
2021/22



Moon Camp is an education project run in collaboration between ESA and the Airbus Foundation, in partnership with Autodesk.

OVERVIEW

In the future, to enable astronauts to stay on the Moon for long periods of time, new infrastructures must be developed to overcome important challenges. Such challenges include protection from radiation and meteorites, energy production, the extraction and recycling of water, food production and much more. The Moon Camp Challenge invites you to 3D design one or more components of a Moon base.

The Moon Camp Challenge is divided into three separate categories featuring different levels of complexity: Moon Camp Discovery (beginners), Moon Camp Explorers (intermediate) and Moon Camp Pioneers (advanced).

In Moon Camp Discovery each team's mission is to 3D design only one component of a Moon Camp, using Tinkercad. Teams can choose to design the:

- Lunar Lander
- Lunar Orbital Space Station
- Lunar Rover
- Moon Base
- Rocket
- Space Suit

Moon Camp Discovery is a non-competitive mission for beginners. All participants whose entries comply with the guidelines will receive a special participation certificate and their project will be displayed on the Moon Camp online platform.

TIMELINE

Registrations are open from **15 September 2021 to 21 April 2022.**

WHO CAN PARTICIPATE?

To participate in Moon Camp Discovery, teams should be comprised of 1 to 6 students and must be supported by a teacher, educator or parent. An adult must submit the project for minors.

Participation in Moon Camp Discovery is open **worldwide*** to teams of students aged up to 19 years old, but it is recommended for students aged 6 to 14 years old. Students attending a postsecondary/tertiary institution are not eligible to participate.

Teams are allowed to submit their project to both Moon Camp Discovery and Moon Camp Explorers or Pioneers.

There is no limit to the number of teams a teacher or educator and school or club can enter.

* Moon Camp Challenge is open worldwide. In the framework of the current collaboration agreement between ESA and Airbus Foundation, if you apply from an ESA Member State*, Slovenia, Canada, Latvia or Lithuania your team will have to fulfill the following extra conditions:

- At least 50% of team members must be citizens of an ESA Member State, Slovenia, Canada, Latvia or Lithuania.
- Each team member must be:
 - Enrolled in a full time primary or secondary school located in an ESA Member State, Slovenia, Canada, Latvia or Lithuania.
 - or, be home-schooled (certified by the National Ministry of Education or delegated authority in an ESA Member State, Slovenia, Canada, Latvia or Lithuania)
 - or, be a member of a club or after-school group, such as Science Club, Scouts or the like.

* ESA Member States in 2021: Austria, Belgium, Czech Republic, Denmark, Estonia, Finland, France, Germany, Greece, Hungary, Ireland, Italy, Luxembourg, the Netherlands, Norway, Poland, Portugal, Romania, Spain, Sweden, Switzerland and the United Kingdom.

HOW TO SUBMIT THE PROJECT?

1. The 3D model must be created exclusively using Autodesk® Tinkercad™. Submissions created in other software programs will not be accepted.
2. Projects must be submitted to the Moon Camp online platform: www.mooncampchallenge.org. The deadline is 21 April 2022.
3. By submitting the project, the participants agree that their project will be shared on the Moon Camp platform. Participants accept that ESA Education and partners have the right to use the entirety or parts of the project for outreach and education purposes.
4. Submissions must include:
 - a short paragraph description of the project written in English;
 - at least one screen capture of the 3D model as a .JPG or .PNG;
 - the public [link](#) to the Tinkercad project with an Attribution-ShareAlike 3.0 (CC-BY-SA 3.0) license.
5. Each team must model all individual components of the design. It is not permitted to import existing CAD data into the design, with the exception of any files provided by Autodesk, ESA, or Airbus Foundation.
6. The team must be the sole author/owner of the project and all materials submitted to the Moon Camp Challenge. Projects sponsored or funded by third parties may not be used. No third party (including your school or project sponsors) should have any rights to materials you submit.
7. ESA and Airbus Foundation, at their sole discretion, reserve the right to disqualify submissions that do not follow the guidelines, or that contain messages that are deemed inappropriate or inadequate for the audience.

QUESTIONS

For any questions, consult the Moon Camp Challenge website mooncampchallenge.org or send an email to moon.camp@esa.int

USEFUL LINKS

Moon Camp Challenge platform
<https://mooncampchallenge.org/>
Tinkercad – 3D Design tool
<https://www.tinkercad.com/>